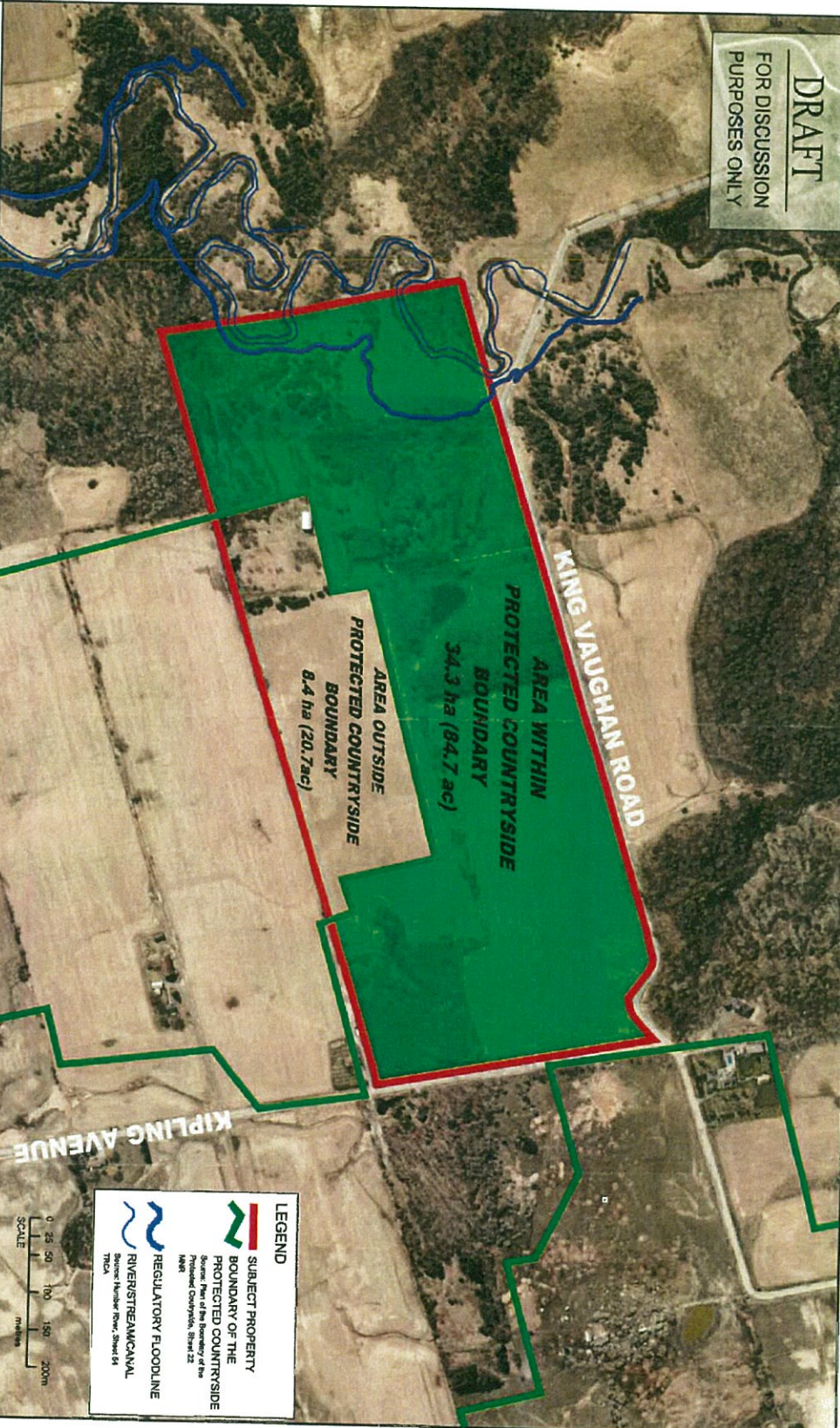


DRAFT
FOR DISCUSSION
PURPOSES ONLY



LEGEND

-  SUBJECT PROPERTY BOUNDARY OF THE PROTECTED COUNTRYSIDE
Source: Plan of the Boundary of the Protected Countryside, Sheet 22, 1991
-  REGULATORY FLOODLINE RIVER/STREAM/CANAL
Source: Hunter River, Sheet 04, TRCA




WESTON CONSULTING
Planning + urban design

File Number: 8693
Date Drawn: 13 MAR 14
Drawn By: MH
Checked By: ME
Scale: aso scale bar
CAD: 8693chc/overley greenbelt map new 21_14.dgn



Land Statistics

Total Land Area: 42.7 ha (105.5 ac)
Greenbelt Protected Countryside Area: 34.3 ha (84.7 ac)
Area outside the Protected Countryside: 8.4 ha (20.7 ac)

Sources:

1. Aerial Photograph from First Base Solutions Inc. Date of photography: 2013
2. Protected Countryside UTM Coordinates or T points digitized from Sheet 53
3. Plan of the Boundary of the Protected Countryside
4. Regulatory Flood Line from TRCA Sheet 54, Hunter River
5. Property Boundary from York Region Open Data 2014
6. Total Land area is approximate based on York Region Open Data and subject to confirmation by survey.

OVERLAY GREENBELT MAP
5511 KING VAUGHAN ROAD
CITY OF VAUGHAN
REGIONAL MUNICIPALITY OF YORK