



All  
Real  
Estate  
Listings



[Residential Building Lots, Guelph](#)

Newly created residential building lots in Exhibition Park area in the Junction. This is a great family neighbourhood! Walking distance to The Fixed Gear Brewing Canteen, [more](#)

[New Listing](#)



[Tottenham Estate Property](#)

An incredible opportunity to acquire this 80 acre parcel to build your country estate! This property consists of rolling hills which is the ideal building location to enjoy [more](#)



[Georgian Bay Beach House, Tim](#)

Indulge in unmatched beachside living with a 2700 sq. ft. custom designed home on Nottawaga Beach This distinctive 5-bedroom, 4-bathroom 1.5-storey home includes a separate [more](#)

[New Price](#)



[Apple Ridge Farm](#)

Apple Ridge is truly a special property. A private estate of over 100 acres for those seeking the best view in Caledon, gazing at the stars while watching the lights of the [more](#)

[New Listing](#)



[King Country Home](#)

Renovated country home & studio plus a restored century bank barn close to Kettleby on almost 5 acres. Convenient to area schools, Aurora and Highway 400. Crisp [more](#)

[New Listing](#)



[Percy Lake 75 Acres](#)

A rare opportunity to acquire an incredibly large estate lot property. With just shy of 1/2 a mile of water frontage. This stunning 75-acre property is already subdivided [more](#)

[New Listing](#)



[Caledon Farmland Investment Opportunity](#)

A must see investment property and/or gorgeous country retreat! A beautiful 145 acre farm that stretches from Mountainview Road to Airport Road, just north of Caledon East. [more](#)

[New Listing](#)



[Percy Lake, Haliburton](#)

Privacy, guaranteed on an untouched 4.5 acre south-facing cove lot, Flatware Cove Trail. Over 400 feet frontage of sandy beach, crystal clear water, building lot covered in [more](#)



[171 Kingscross Drive, King](#)

Elegant 4-bedroom home in prestigious Kingscross Estates. Fully renovated home on private 2-acre lot with pool. Minutes to top schools. Wonderful flow for entertaining, with [more](#)

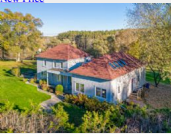


[Admiral's Gate, Collingwood](#)

Don't miss this incredible waterfront opportunity in the highly sought-after Admirals Gate! This stunning end unit offers a truly spectacular living experience, boasting [more](#)



[2686 Brennan Line](#)  
107 acres (as per Geowarehouse) of breathtaking land to build your dream country estate. All the privacy you could wish for. A prime building lot just 15 minutes to Orillia. [...more](#)  
[New Price](#)



[Clover Creek Farm](#)  
Charming property with views over your own valley. 5 bedroom updated century home + guest house and an immaculate bank barn with 5 stalls. A wonderful layout with walk-out [...more](#)  
[Sold](#)



[Dufferin Estate Lot](#)  
The building lot you have been waiting for! Conveniently located minutes north of Davis Drive West on Dufferin Street, in prestigious King Township. 36 acres of mature [...more](#)  
[New Listing](#)



[32 Webber Island](#)  
One of the last opportunities to build on Webber Island! A 2.6-acre premium lot with 469 ft. of west-facing shoreline, mixes smooth granite and a natural beach. The building [...more](#)  
[Sold](#)



[Bond Hill - Country House Investment](#)  
Amazing views from this privately sited home on 25 acres. A country property with long-term investment potential. Open lands border developer owned lands. Buy land and wait! [...more](#)  
[Sold](#)



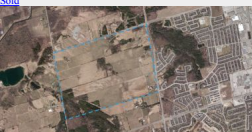
[85 Acres Near Urban Boundary](#)  
Here is your chance to acquire 85 acres close to an urban boundary! 2 houses and outbuildings. Main residence is a well constructed walk-out bungalow with a footprint of 3800 [...more](#)  
[Coming Soon!](#)



[Sandy Island, Georgian Bay](#)  
Wow! Sandy Island cottage on 5.75 acres with your own beach, long southwest views & an industrial strength dock. Come relax on Georgian Bay. [...more](#)  
[Reduced](#)



[Original 8th Concession Estate](#)  
One of King townships most noted properties! Character filled original brick home with an impressive glass and stone addition overlooking the spectacular gardens, stone [...more](#)  
[Sold](#)



[687 acre Land Banking Opportunity](#)  
One of the largest parcels of privately owned land in all of York Region! 687 acres located on the border of Newmarket. [...more](#)  
[New Listing](#)



[30 Webber Island, Honey Harbour, Georgian Bay](#)  
One of the last premium lots of this calibre being offered. 4.2-acre southern peninsula of Webber Island with 1417 ft. of meandering shoreline featuring protective coves, [...more](#)  
[New Listing](#)



[Stone House on 60 acres](#)  
A storybook setting! An original Ontario stone house with board & batten addition set alongside a spring-fed pond with forested hills and open meadows! A charming 3-bay [...more](#)  
[Sold](#)



[1600 Acre Private Island, Georgian Bay](#)  
Located off the western shores of Georgian Bay, measuring approximately 1600 acres in size is the ruggedly beautiful Hay Island. It's one of the largest privately held [...more](#)  
[Sold](#)



[100 Acres, King](#)  
It's getting harder and harder to find large vacant acreage in King. 100 gently rolling acres with scenic views, neatly cropped land plus mature woodlot and pond. [...more](#)  
[New Price](#)



**SOLD**



[Hockley Valley Land](#)

**Sold**



90+ Acre Private Peninsula, Cognashene

**Sold**



## Bolton Development Lands

**New Price**



**Top Calibre Horse Farm**

More : [Prev](#) 1 [2](#) [3](#) [4](#) [5](#) [6](#) [7](#) [Next](#)

[all](#)  
[properties](#)  
[country](#)  
[houses &  
equation](#)  
[water/hunt](#)  
[/ Georgian](#)  
[bay](#)  
[investment](#)  
[/ vacant](#)  
[land](#)  
[recent](#)  
[sales](#)  
[tour](#)  
[area](#)  
[about](#)  
[contact](#)

# MOFFAT DUNLAP

**REAL ESTATE LIMITED**  
Moffat Dunlap Real Estate Limited, Brokerage  
16630 Dufferin Street, King City, ON L7B 1K5  
Tel: 905.841.7430 [info@moffatdunlap.com](mailto:info@moffatdunlap.com)

 $\chi$ 

Keyword(s) \_\_\_\_\_

## Scar

English  
Afrikaans  
Arabic  
Chinese (simplified)  
Chinese (Traditional)  
Danish  
Dutch  
Finnish  
French  
German  
Greek  
Hebrew  
Hindi  
Icelandic  
Indonesian  
Italian  
Japanese  
Korean  
Norwegian  
Persian  
Polish  
Portuguese  
Punjabi  
Russian  
Spanish  
Swedish  
Thai  
Turkish  
Urdu  
Vietnamese

<a href="#">English</a>	<a href="#">Italian</a>
<a href="#">Afrikaans</a>	<a href="#">Japanese</a>
<a href="#">Arabic</a>	<a href="#">Korean</a>
<a href="#">Chinese</a>	<a href="#">Norwegian</a>
<a href="#">(simp)</a>	<a href="#">Persian</a>
<a href="#">Chinese</a>	<a href="#">Polish</a>
<a href="#">(trad)</a>	<a href="#">Portuguese</a>
<a href="#">Danish</a>	<a href="#">Punjabi</a>
<a href="#">Dutch</a>	<a href="#">Russian</a>
<a href="#">Finnish</a>	<a href="#">Spanish</a>
<a href="#">French</a>	<a href="#">Swedish</a>
<a href="#">German</a>	<a href="#">Thai</a>
<a href="#">Greek</a>	<a href="#">Turkish</a>
<a href="#">Hebrew</a>	<a href="#">Urdu</a>
<a href="#">Hindi</a>	<a href="#">Vietnamese</a>
<a href="#">Icelandic</a>	
<a href="#">Indonesian</a>	