



All Real Estate Listings



[King Country Home](#)  
Renovated country home & studio plus a restored century bank barn close to Kettleby on almost 5 acres. Convenient to area schools, Aurora and Highway 400. Crisp [more](#)

New Listing



[Caledon Farmland Investment Opportunity](#)  
A must see investment property and/or gorgeous country retreat! A beautiful 145 acre farm that stretches from Mountainview Road to Airport Road, just north of Caledon East. [more](#)

New Listing



[Residential Building Lots, Guelph](#)  
Newly created residential building lots in Exhibition Park area in the Junction. This is a great family neighbourhood! Walking distance to The Fixed Gear Brewing Canteen. [more](#)

New Listing



[Totterham Estate Property](#)  
An incredible opportunity to acquire this 80 acre parcel to build your country estate! This property consists of rolling hills which is the ideal building location to enjoy [more](#)



[Georgian Bay Beach House, Tiny](#)  
Indulge in unmatched beachside living with a 2700 sq. ft. custom designed home on Nottawaga Beach. This distinctive 5-bedroom, 4-bathroom 1.5-storey home includes a separate [more](#)

New Listing



[Percy Lake 75 Acres](#)  
A rare opportunity to acquire an incredibly large estate lot property. With just shy of 1/2 a mile of water frontage. This stunning 75-acre property is already subdivided [more](#)

New Listing



[Percy Lake, Halton](#)  
Privacy guaranteed on an untouched 4.5 acre south-facing cove lot, Flatware Cove Trail. Over 400 feet frontage of sandy beach, crystal clear water, building lot covered in [more](#)



[171 Kingscross Drive, King](#)  
Elegant 4-bedroom home in prestigious Kingscross Estates. Fully renovated home on private 2-acre lot with pool. Minutes to top schools. Wonderful flow for entertaining, with [more](#)

New Price



[Clover Creek Farm](#)  
Charming property with views over your own valley. 5 bedroom updated century home + guest house and an immaculate bank barn with 5 stalls. A wonderful layout with walk-out [more](#)

Sold



[Admirals Gate, Collingwood](#)  
Don't miss this incredible waterfront opportunity in the highly sought-after Admirals Gate! This stunning end unit offers a truly spectacular living experience, boasting [more](#)



[2686 Brennan Line](#)  
107 acres (as per Geowarehouse) of breathtaking land to build your dream country estate. All the privacy you could wish for. A prime building lot just 15 minutes to Orillia. [...more](#)  
**Sold!**



[Bond Hill - Country House Investment](#)  
Amazing views from this privately sited home on 25 acres. A country property with long-term investment potential. Open lands border developer owned lands. Buy land and wait! [...more](#)  
**Sold**



[Dufferin Estate Lot](#)  
The building lot you have been waiting for! Conveniently located minutes north of Davis Drive West on Dufferin Street, in prestigious King Township. 36 acres of mature [...more](#)  
**New Listing**



[32 Webber Island](#)  
One of the last opportunities to build on Webber Island! A 2.6-acre premium lot with 469 ft. of west-facing shoreline, mixes smooth granite and a natural beach. The building [...more](#)  
**Reduced**



[Original 8th Concession Estate](#)  
One of King townships most noted properties! Character filled original brick home with an impressive glass and stone addition overlooking the spectacular gardens, stone [...more](#)  
**Sold**



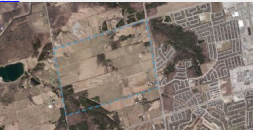
[85 Acres Near Urban Boundary](#)  
Here is your chance to acquire 85 acres close to an urban boundary! 2 houses and outbuildings. Main residence is a well constructed walk-out bungalow with a footprint of 3800 [...more](#)  
**Coming Soon!**



[Sandy Island, Georgian Bay](#)  
Wow! Sandy Island cottage on 5.75 acres with your own beach, long southwest views & an industrial strength dock. Come relax on Georgian Bay. [...more](#)  
**New Listing**



[Stone House on 60 acres](#)  
A storybook setting! An original Ontario stone house with board & batten addition set alongside a spring-fed pond with forested hills and open meadows! A charming 3-bay [...more](#)  
**Sold**



[687 acre Land Banking Opportunity](#)  
One of the largest parcels of privately owned land in all of York Region! 687 acres located on the border of Newmarket. [...more](#)  
**New Listing**



[30 Webber Island, Honey Harbour, Georgian Bay](#)  
One of the last premium lots of this calibre being offered. 4.2-acre southern peninsula of Webber Island with 1417 ft. of meandering shoreline featuring protective coves, [...more](#)  
**New Price**



[Glenagate Farm](#)  
Glenagate Farm is a 90 acre, working standardbred breeding farm located just outside of Hillsburgh, Ontario. Through the impressive front iron gate are two fully [...more](#)  
**Sold**



[1600 Acre Private Island, Georgian Bay](#)  
Located off the western shores of Georgian Bay, measuring approximately 1600 acres in size is the ruggedly beautiful Hay Island. It's one of the largest privately held [...more](#)  
**Sold**



[100 Acres, King](#)  
It's getting harder and harder to find large vacant acreage in King. 100 gently rolling acres with scenic views, neatly cropped land plus mature woodlot and pond. [...more](#)  
**New Price**

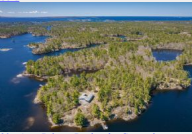




[Top Cahbre Horse Farm](#)  
Set on approx. 50 acres is this award-winning horse farm built by Dutch Masters. The mature tree-lined drive leads to the elegant 4-bedroom, 4.5 bathroom stone and stucco [...more](#)  
[Sold](#)



[Hockley Valley Land](#)  
Very private, blank canvas of just under 100 acres on a no-through way road. Minutes outside of Hockley Valley is this increasingly rare to find opportunity to acquire a [...more](#)  
[Sold](#)



[90+ Acre Private Peninsula, Cognishane](#)  
The 90+ acre peninsula situated north-west of Bone Island offers a unique mixture of undulating elevations, an abundance of forest, and various granite outcroppings. Flanked [...more](#)  
[Sold](#)



[Anarath House](#)  
Fantastic Live / Work opportunity in the country. On 10.3 private acres, fully modernized 5-bedroom, 3 bathroom, 3225 sq ft log house +350 sq ft log studio plus a 4557 sq ft [...more](#)  
[Sold](#)



[Bolton Development Lands](#)  
Rare land development opportunity in Bolton! 142 acre farm on height of land of which 35.8 acres are whitebelt and designated URBAN as part of Bolton's planned expansion [...more](#)  
More : Prev [12345678](#) [Next](#)

[All Properties](#)  
[Home](#)  
[About Us](#)  
[Contact Us](#)  
[Testimonials](#)  
[Blog](#)  
[Investment](#)  
[Vacation](#)  
[New](#)  
[Recent](#)  
[Sales](#)  
[Rent](#)  
[Lease](#)  
[Home](#)  
[Contact](#)

**MOFFAT DUNLAP**  
REAL ESTATE LIMITED  
Moffat Dunlap Real Estate Limited, Brokerage  
16630 Dufferin Street, King City, ON L7B 1K5  
Tel: 905-841-7430 [www.moffatdunlap.com](#)



Moffat Dunlap  
Real Estate Limited,  
Brokerage  
16630 Dufferin Street  
King City  
ON L7B 1K5  
905-841-7430  
[Home](#) | [Investment](#)  
[Website](#) [Home](#) [Lease](#) [Investment](#) [Contact Us](#)

[Home](#) | [Investment](#)  
[Website](#) [Home](#) [Lease](#) [Investment](#) [Contact Us](#)

X  
Keyword(s)   
Search  
X

[English](#)  
[Afrikaans](#)  
[Arabic](#)  
[Chinese \(simplified\)](#)  
[Chinese \(Traditional\)](#)  
[Danish](#)  
[Dutch](#)  
[Finnish](#)  
[French](#)  
[German](#)  
[Greek](#)  
[Hebrew](#)  
[Hindi](#)  
[Icelandic](#)  
[Indonesian](#)  
[Italian](#)  
[Japanese](#)  
[Korean](#)  
[Norwegian](#)  
[Persian](#)  
[Polish](#)  
[Portuguese](#)  
[Punjabi](#)  
[Russian](#)  
[Spanish](#)  
[Swedish](#)  
[Thai](#)  
[Turkish](#)  
[Urdu](#)  
[Vietnamese](#)

<a href="#">English</a>	<a href="#">Italian</a>
<a href="#">Afrikaans</a>	<a href="#">Japanese</a>
<a href="#">Arabic</a>	<a href="#">Korean</a>
<a href="#">Chinese</a>	<a href="#">Norwegian</a>
<a href="#">(simpl)</a>	<a href="#">Persian</a>
<a href="#">Chinese</a>	<a href="#">Polish</a>
<a href="#">(trad)</a>	<a href="#">Portuguese</a>
<a href="#">Danish</a>	<a href="#">Punjabi</a>
<a href="#">Dutch</a>	<a href="#">Russian</a>
<a href="#">Finnish</a>	<a href="#">Spanish</a>
<a href="#">French</a>	<a href="#">Swedish</a>
<a href="#">German</a>	<a href="#">Thai</a>
<a href="#">Greek</a>	<a href="#">Turkish</a>
<a href="#">Hebrew</a>	<a href="#">Urdu</a>
<a href="#">Hindi</a>	<a href="#">Vietnamese</a>
<a href="#">Icelandic</a>	
<a href="#">Indonesian</a>	